



*Matryx 146" Cable
Scratchers*



*Matryx 137" Spring
Scratchers & Storage Hook*

THE SCRATCHER SKID BLOCK (SSB) INSTALLATION GUIDE



INCLUDED PARTS & TOOLS REQUIRED

Matryx/ XC 137
Mounts Shown



For SKS 146 guide skip to next section

SSB's include 4 pieces:

Outside and Inside.

The outside part is thicker than the inside part.

Tools required:

- Phillips Screw Driver
- 7/16" Wrench/Socket
- 1/2" Wrench/Socket
- Appropriately sized wrench for scratcher hardware

Hardware:

- Supplied hardware will depend on snowmobile model.



Step 1: Locate mounting slot and clean surface of skid of all debris, snow, and ice.



SSB's are designed to fit into a slot in the middle of the skid frame. Exact location varies between models.

(Polaris Pro-S Axys 137" chassis shown left)



Polaris Pro-S Axys 137"



Polaris Axys 144"

More installation locations shown at the end of the guide



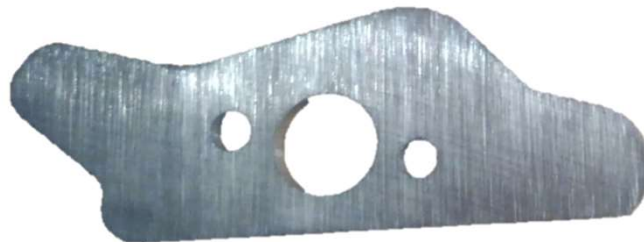
Step 2 Cable Style: Install scratcher on to outside SSB as shown using the directions that came with the scratcher as a guideline. The 3/8-16 hex head scratcher bolt goes through the center hole of the outside SSB. To install the scratcher onto the outside SSB, the easiest method is to place the outside SSB into a bench vise, align the scratcher 80-90 degrees perpendicular to the bottom (pointing almost straight down towards the ground), and then tighten the scratcher to 40 ft-lbs torque. Apply red Loctite to scratcher bolt. The snowmobile's skid is helpful to hold the scratcher mount while tightening to achieve torque spec in lieu of a bench vice.

Outside
SSB



The outside part is thicker than the inside part.

Inside
SSB



Step 2 Spring Style – (For Indy 137 & Indy XCR 136 Models see next page): The scratcher mount supplied with the scratcher is installed with the SSB mounts onto the snowmobile rail all at once. Reference the installation guide supplied with the scratchers. Install the new, longer replacement hardware in lieu of the hardware supplied with the scratchers. The mount supplied with the scratchers goes on the outside of the SSB mounts. Fit up the SSB mounts into the snowmobile rail with the black scratcher mount and ice scratcher. Install mounting hardware to snug everything together. Ensure proper alignment and fitment into the slot. Check the length of the scratcher tine. Shorten the scratcher tine if desired and reinstall the mounts. Tighten the scratcher mounting hardware to the 30ft-lbs torque. For Matryx/XC 129 & 137 sleds, install One Rig storage hooks per the storage hook installation guide. For Matryx 146" and Axys 144" sleds, the RG-1 Rail Guards store the scratcher. On other sleds, the storage device supplied with the scratchers must be used and may require drilling.



Matryx
146"



Step 2 Spring Style – For Indy 137 and Indy XCR 136 Models only: Reference the installation guide supplied with the scratchers. Install the new, longer replacement hardware in lieu of the hardware supplied with the scratchers. The black scratcher mount supplied with the scratchers goes on the outside of the SSB mounts. With the scratcher inserted into the black scratcher mount, install two M8 bolts thru the black scratcher mount and thru the holes in the outside SSB as shown in Image 2A below. Install locknut onto center bolt and torque to 30ft-lbs (Image 2B). Next, insert the mounted assembly into the slot on the snowmobile rail (Image 2C). Install the thinner (1/4" thick) SSB onto the inside of the rail, aligning the three holes together. Reusing an M8 bolt supplied with the scratchers and the M8 lock nut supplied with the mounts, install a third bolt into the rear hole of the mounts. Install locknuts supplied with the scratchers onto the remaining two bolts and tighten to approximately 30 ftlbs. Install One Rig storage hooks per the storage hook installation guide.



Image 2A



Image 2B

Image 2C

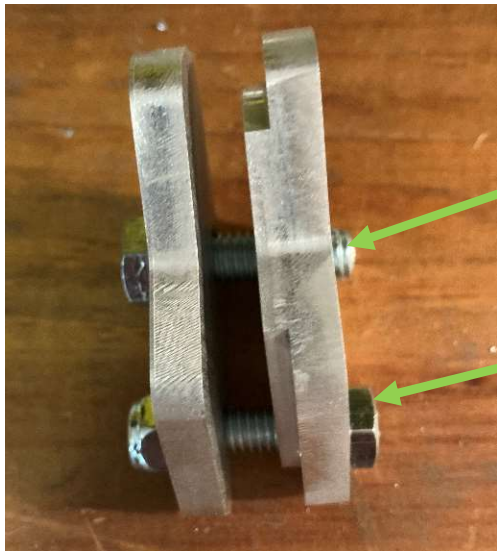


Step 3: Place the inside SSB on the inside of the skid.

Step 4: Place the outside scratcher into the slot in the sled's rail and align with inside SSB using hardware to align.

Step 5: Assemble and secure using supplied 1/4-20 lock nuts for cable mounts, or the M8 lock nuts supplied with the spring style scratchers.

Note for ZR 137 and Rush XCR model snowmobiles: The mounts for these sleds are slightly different for cable scratchers. For spring scratchers, the installation is the same as Steps 1-5. For cable scratchers, the mounts are installed into the sled's rail before installing the cable scratcher. Clamp the mounts in place using the 5/16 bolt and nut. Once in place, use the supplied 3/8" bolt to replace the bolt supplied with the cable scratchers and install the cable scratchers as directed by the cable scratcher installation guide, tightening to 40 ft-lbs torque.



ZR137 mounts shown

3/8" bolt

5/16" bolt
& nut



ZR137 mounts shown



SKS 146 Guide



Inside/Outside parts interchangeable

Included parts:

- 4X Inside/Outside universal pieces.
- 2X 3/8-16 Bolts

Tools Needed:

- 9/16" box wrench
- Torque Wrench
- Red Loctite



SKS 146 Guide



Installation Steps:

1. Locate mounting slot and situate mounts in slot loosely to ensure proper orientation.
2. Installing the lock washer (not included) provided with the stock cable scratchers, place the supplied 3/8" bolt through holes in mounts from the inside.
3. Apply thread locking compound (red Loctite) and thread the scratcher onto the protruding bolt threads on the outside of the sled.
4. Once threaded on hand tight, maintain proper scratcher alignment and torque to spec as recommended by the scratcher manufacturer (approximately 40-ft-lbs). The inner bogie idler wheels may need to be removed for access.



Mounting Locations

Polaris
Indy XCR 136"



Slot

Polaris
Matryx 146"



Slot Behind Torsion Spring



Mounting Locations

Polaris XC & Matryx 129"



Polaris XC & Matryx 137"



Forward Slot

Large Middle Slot

Mounting Locations

Polaris XCR Rush/Switchback



Slot Behind Bogie

Polaris Axys 121"



Slot Behind Bogie



Mounting Locations

Polaris
Titan



Rear Slot

2015-2018 137" XF/ZR and Yamaha Sidewinder 137"



Slot Below Torsion Spring



Mounting Locations

Ski Doo Renegade 137" Renegade Gen 4 & Renegade Rev- X



Slot Below Torsion Spring, Behind Bogie Wheel



Slot Below Torsion Spring, Behind Bogie Wheel





LAST STEP: RIDE IT!

Thank you for purchasing One Rig SSB's! Our products are fully warrantied should the product(s) break under normal use. Operator assumes all liability for proper equipment use while using One Rig products. Please contact us with any questions, comments, or suggestions. Ride safe, ride right.

Eric Plourde
Owner, Design Engineer
One Rig Design LLC
Poland, ME
epLOURDE@onerigdesign.com

Find us on  