



STORAGE HOOK INSTALLATION GUIDE

FITMENT GUIDE FOR SNOWMOBILE MODELS:

2023+ POLARIS INDY BOOST

2023+ POLARIS INDY XC, SP

2023+ POLARIS INDY ADVENTURE 137

SKIP TO STEP 1B FOR SNOWMOBILE MODELS:

2021-23 POLARIS INDY VR1

2022-23 POLARIS INDY XCR 136

2019-22 POLARIS INDY XC, SP

ALL YEARS POLARIS INDY ADVENTURE 137"

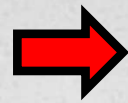
ALL YEARS POLARIS TITAN

SKIP TO PAGE 5 FOR SNOWMOBILE MODELS:

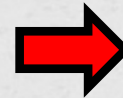
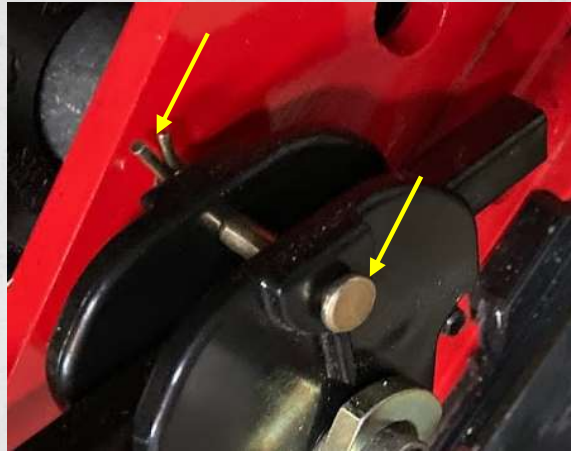
AXYS SWITCHBACK PRO-S, PRO-X, XCR



STEP 1A: REPLACE OEM SPRING ROLLER SHAFT



**REMOVE COTTER PIN, THEN
SPRING RETAINING PIN**



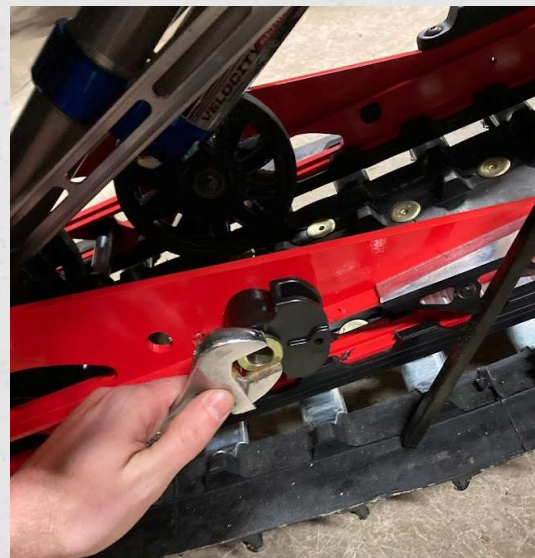
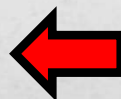
**REMOVE TORSION SPRING
FROM GUIDE**



**REMOVE ADJACENT INNER
IDLER WHEEL, TO GAIN
ACCESS TO SHAFT SPRING
ROLLER BOLT**



**REVERSE THE PROCESS
TO INSTALL THE NEW
SPRING ROLLER SHAFT
USING THREAD-LOCKER.**



**HOLDING THE FLATS OF THE SPRING ROLLER SHAFT WITH A
WRENCH, USE A T40 TORX BIT TO REMOVE THE RETAINING SCREW
ON THE INSIDE OF THE RAIL
REPLACE THIS SCREW WITH THE FLANGE BOLT PROVIDED.**

STEP 1B: THREAD SPRING ROLLER SHAFT FOR ICE SCRATCHER STORAGE HOOK



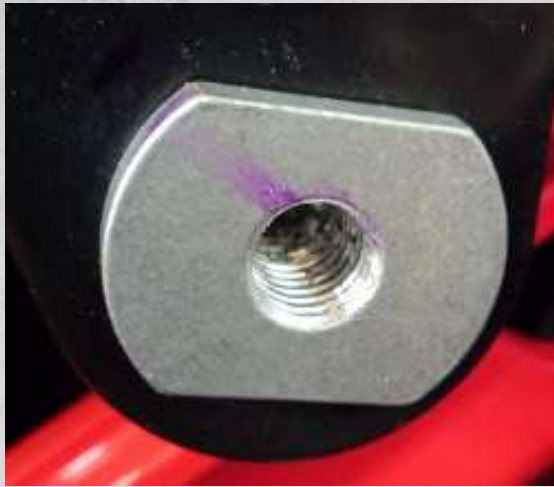
Mounting Block Location

Suspension Slider Guide

LOCATE SUSPENSION TORSION SPRING SLIDER GUIDE



NOTE SMOOTH BORED SECTION OF HOLE IN EXISTING SHAFT. INSERT TAP INTO HOLE ALIGNED PERPENDICULAR TO THE SLEEVE. LIGHTLY TURN TAP CLOCKWISE 8-10 REVOLUTIONS. THE KIT INCLUDES TWO FLANGE HEAD BOLTS, IT IS RECOMMENDED TO REPLACE THE POLARIS T40 TORX HEAD SCREW HOLDING THE ROLLER SHAFT TO THE RAIL WITH THESE SCREWS. THE POLARIS SCREW HAS BEEN SUBJECT TO QUALITY ISSUES AND RELATED FAILURES (UNRELATED TO, AND INDEPENDENT OF, THE STORAGE HOOKS BEING INSTALLED). THE REPLACEMENT BOLTS ARE CERTIFIED CLASS 10.9 FASTENERS.



**STEP 1B CONTINUED:
REMOVE TAP AND
OBSERVE CUT THREADS
IN SHAFT. THERE
SHOULD BE MINIMAL
UNTHREADED BORE
REMAINING. NOTE: THE
THREAD SIZE IS
DIFFERENT THAN THE
EXISTING THREAD
SIZE, SO ENSURE THE
TAP DOES NOT CUT
INTO EXISTING
THREADS.**

**STEP 2: ATTACH NUT AND LOCK WASHER TO
HOOK BEFORE THREADING HOOK INTO SPRING
ROLLER SHAFT WITH THREAD-LOCKER.**



**INSERT HOOK AS FAR
AS POSSIBLE WHILE
STILL BEING ABLE TO
EASILY GET THE
SCRATCHER TIP INTO
AND OUT OF HOOK.**

**HOLD HOOK IN PLACE
AND SECURELY
TIGHTEN NUT**



FIGURE 5.3



FITMENT GUIDE FOR SNOWMOBILE MODELS:

AXYS SWITCHBACK PRO-S, PRO-X, XCR, ADVENTURE

STEP 1:

**REMOVE ITEM 2 CROSS SHAFT'S BOLT (FIGURE 5.1).
ITEM 12 CROSS SHAFT CAN REMAIN IN PLACE.**

STEP 2:

**INSTALL MACHINED ALUMINUM BRACKET OVER RAIL AS
SHOWN IN FIGURE 5.2, WITH FACTORY ITEM 2 BOLT
GOING THRU ALUMINUM BRACKET AND SUPPLIED M10
WASHER POSITIONED BETWEEN ALUMINUM BRACKET
AND RAIL (FIGURE 5.3). REINSTALL AND TIGHTEN ITEM
2 BOLT. REPEAT FOR OPPOSITE SIDE OF SLED.**

STEP 3:

**ALIGN HOOK VERTICAL AND TIGHTEN NUT. LOCTITE RECOMMENDED BUT NOT
REQUIRED IF SUPPLIED LOC-WASHER USED.**

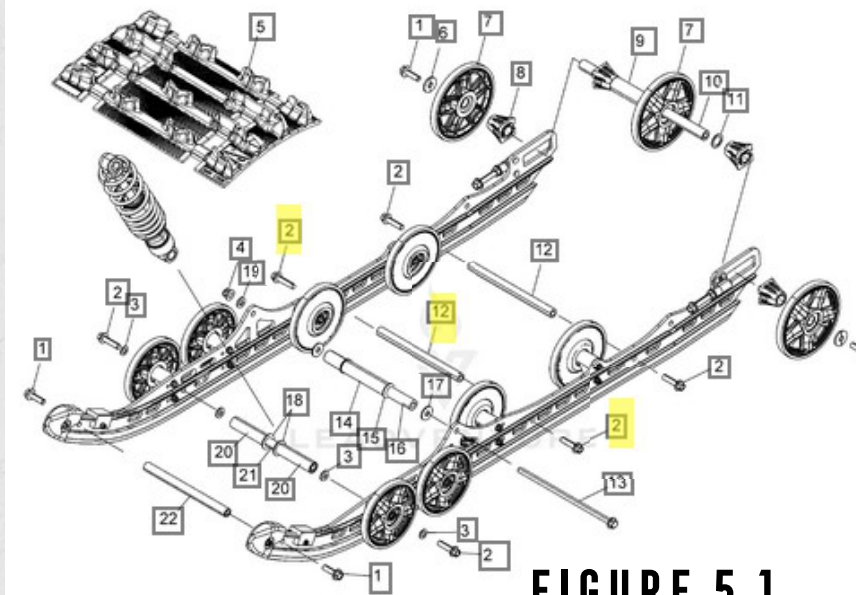


FIGURE 5.1